

PARTS LIST

Retractor

ERL-3

ERL-6/ERL-6S

ERL-8/ERL-8S

ERL-11/ERL-11S

ERL-14/ERL-14S

This Parts List covers products from 2025 onwards. Please contact us for any inquiries regarding other parts of the product.

1. Introduction

- Please use only genuine parts for replacements or repairing.

- Scope of the parts list

This parts list shows parts for the Retractor ERL series. Models are as below.

Model	Load range (kg)	Factory set weight (kg)	Max cable travel (m)	Mass (kg)
ERL-3	1.5~3.0	2.5	4.0	3.8
ERL-6	3.0~6.0	4.5	4.0	4.4
ERL-8	5.0~8.0	7.0	4.0	4.8
ERL-11	8.0~11.0	8.0	4.0	5.1
ERL-14	11.0~14.0	7.0	4.0	5.1
ERL-6S	3.0~6.0	4.5	4.0	4.4
ERL-8S	5.0~8.0	7.0	4.0	4.8
ERL-11S	8.0~11.0	8.0	4.0	5.1
ERL-14S	11.0~14.0	7.0	4.0	5.1

- How to find the parts from the list

Please refer the reference number on the exploded view and choose the parts from the list according to its reference number.

- How to order the parts

Please inform us or our distributors of the parts information which include the model, part description, parts number and quantity.

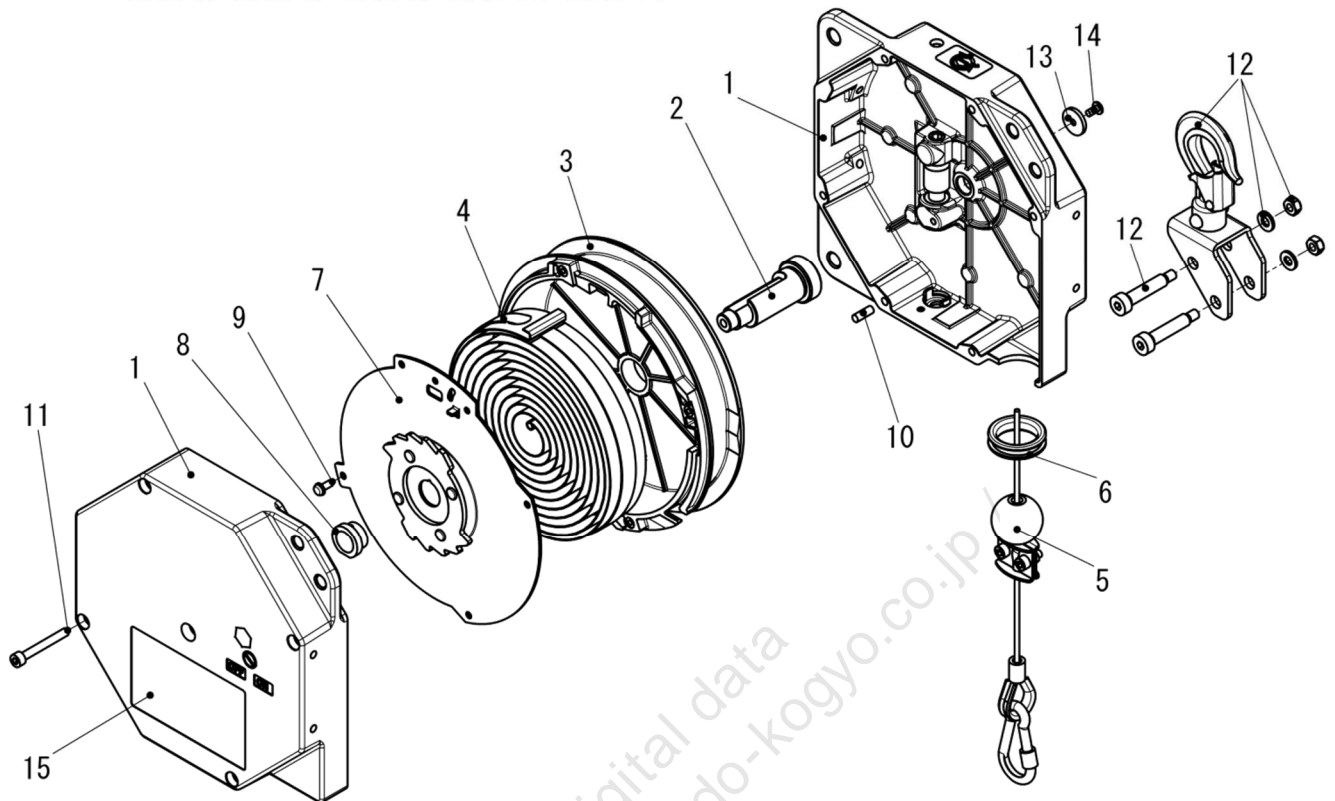
Example

model: ERL-3 parts name: drum parts number: P2B100199 quantity: 1

2. Parts list

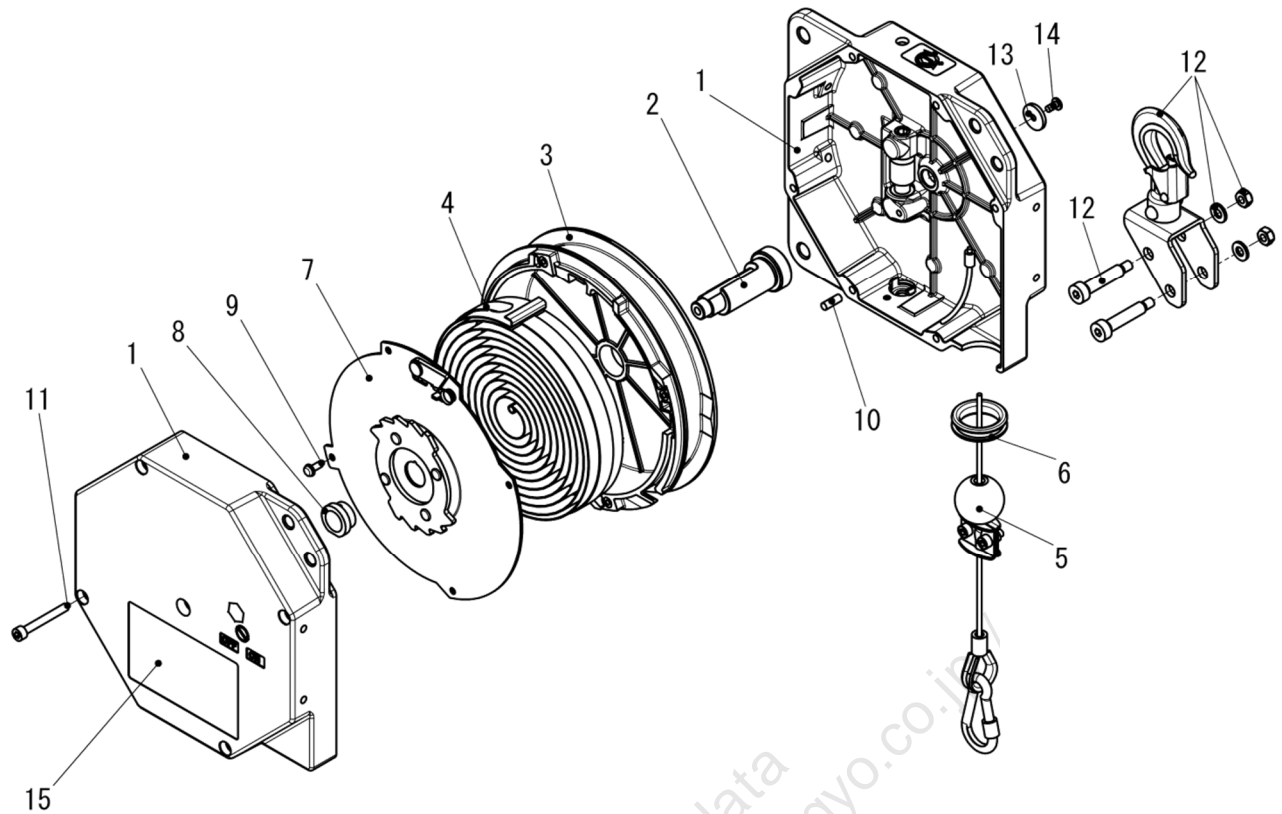
2-1 Retractor Body

■ ERL-3/ERL-6/ERL-8/ERL-11/ERL-14



Ref. No.	Parts No.	Description	Quantity					Remarks
			ERL-3	ERL-6	ERL-8	ERL-11	ERL-14	
1	LBP002275	Casing set	1	1	1	1	1	Refer to P.9
2	P2B301737	Spindle	1	1	1	1	1	
3	P2B100199	Drum	1	1	1	1	1	
4	P2B301717	Spring	1	-	-	-	-	
4	P2B301718	Spring	-	1	-	-	-	
4	P2B301719	Spring	-	-	1	-	-	
4	P2B301720	Spring	-	-	-	1	-	
4	P2B301721	Spring	-	-	-	-	1	
5	LBP002251	Wire rope assembly	1	1	1	1	1	Refer to P.10
6	P2B402913	Bushing	1	1	1	1	1	
7	LBP002255	Drum cover assembly	1	1	1	1	1	
8	P2B402916	Bushing	1	1	1	1	1	
9	P2B402917	Screw with washer	4	4	4	4	4	
10	KA42410514	Spring pin	2	2	2	2	2	
11	KA00910540	Cap screw	4	4	4	4	4	
12	LBP002276	Top hook assembly	1	1	1	1	1	Refer to P.10
13	P2B402926	Plate	1	1	1	1	1	
14	P2B402462	Cap screw	1	1	1	1	1	
15	P2B301722	Name plate	1	-	-	-	-	
15	P2B301723	Name plate	-	1	-	-	-	
15	P2B301724	Name plate	-	-	1	-	-	
15	P2B301725	Name plate	-	-	-	1	-	
15	P2B301726	Name plate	-	-	-	-	1	

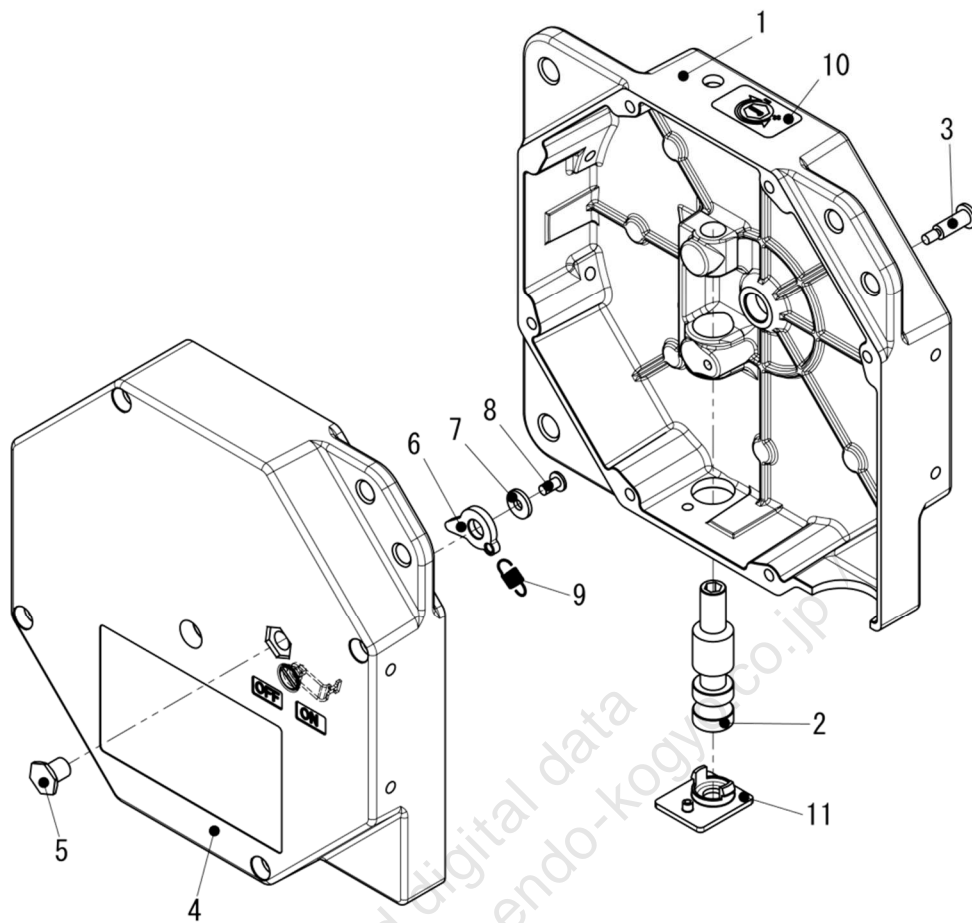
■ ERL-6S/ERL-8S/ERL-11S/ERL-14S



Ref. No	Parts No.	Description	Quantity				Remarks
			ERL-6S	ERL-8S	ERL-11S	ERL-14S	
1	LBP002275	Casing set	1	1	1	1	Refer to P.9
2	P2B301737	Spindle	1	1	1	1	
3	P2B100199	Drum	1	1	1	1	
4	P2B301718	Spring	1	-	-	-	
4	P2B301719	Spring	-	1	-	-	
4	P2B301720	Spring	-	-	1	-	
4	P2B301721	Spring	-	-	-	1	
5	LBP002251	Wire rope assembly	1	1	1	1	Refer to P.10
6	P2B402913	Bushing	1	1	1	1	
7	LBP002256	Drum cover assembly	1	1	1	1	
8	P2B402916	Bushing	1	1	1	1	
9	P2B402917	Screw with washer	4	4	4	4	
10	KA42410514	Spring pin	2	2	2	2	
11	KA00910540	Cap screw	4	4	4	4	
12	LBP002276	Top hook assembly	1	1	1	1	Refer to P.10
13	P2B402926	Plate	1	1	1	1	
14	P2B402462	Cap screw	1	1	1	1	
15	P2B301727	Name plate	1	-	-	-	
15	P2B301728	Name plate	-	1	-	-	
15	P2B301729	Name plate	-	-	1	-	
15	P2B301730	Name plate	-	-	-	1	

2-2 Casing set

- Retractor body ref.1

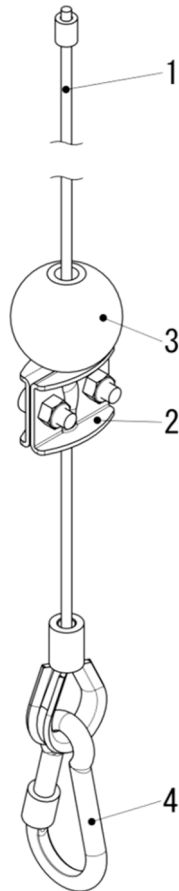


Part No.LBP002275

Ref. No.	Parts No.	Description	Quantity	Remarks
1	-	Casing	1	With painted
2	-	Worm	1	
3	-	Shoulder bolt	1	
4	-	Casing complete	1	With painted
5	-	Pin	1	
6	-	Ratchet	1	
7	-	Washer	1	
8	-	Cap screw	1	
9	P2B403191	Spring	1	
10	P2B301731	Label	1	
11	P2B301741	Cap	1	

2-3 Wire rope assembly

- Retractor body ref.5

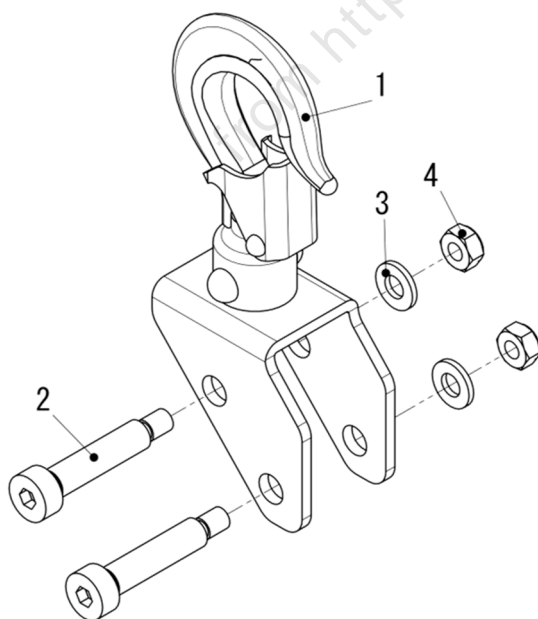


Parts No. LBP002251

Ref. No.	Parts No.	Description	Quantity
1	LBP002250	Wire rope	1
2	LBP002238	Stopper	1
3	P2B402879	Buffer	1
4	P2B402891	Hook	1

2-4 Top hook assembly

- Retractor body ref.12



Parts No. LBP002276

Ref. No	Parts No.	Description	Quantity
1	LBP002258	Hook complete	1
2	P2B402924	Shoulder bolt	2
3	P2B402925	Washer	2
4	KA25520602	U-nut	2

ENDO 遠藤工業株式会社

〒959-1261 新潟県燕市秋葉町 3 丁目 14 番 7 号
TEL:0256-62-5133 FAX:0256-62-5772
<https://www.endo-kogyo.co.jp>

事業所情報につきましては、
二次元バーコードよりご確認ください。



ENDO ENDO KOGYO CO., LTD.

3-14-7, Akiba cho, Tsubame, Niigata 959-1261, Japan
<https://www.endo-kogyo.co.jp/english> TEL: 81-256-62-5133

- 本書ならびに本商品の仕様は改善のために予告なしに変更することがあります。
- 本書の内容の無断転載を禁止します。
- This manual and the specifications of this product are subject to change for improvement without advance notice.
- It is strictly prohibited to reprint or copy any information contained in this manual.