

Spring Balancer

EWF-9	EWF-40	EWF-90
EWF-15	EWF-50	EWF-105
EWF-22	EWF-60	EWF-120
EWF-30	EWF-70	

This Parts List covers products from 2021 onwards. Please contact us for any inquiries regarding other parts of the product.

1. Introduction

- Please use only genuine parts for replacements or repairing.

- Scope of the parts list

This parts list shows parts for the Spring balancer EWF series. Models are as below.

Model	Capacity range (kg)	Factory Setting Load (kg)	Stroke (m)	Wire rope diameter (φ mm)	Mass (kg)
EWF-9	4.5~9.0	6.5	1.3	4.0	3.5
EWF-15	9.0~15.0	12	1.3	4.0	3.8
EWF-22	15.0~22.0	18	1.5	4.76	7.3
EWF-30	22.0~30.0	26	1.5	4.76	7.7
EWF-40	30.0~40.0	35	1.5	4.76	9.7
EWF-50	40.0~50.0	45	1.5	4.76	10.1
EWF-60	50.0~60.0	55	1.5	4.76	11.1
EWF-70	60.0~70.0	65	1.5	4.76	11.4
EWF-90	70.0~90.0	80	2.0	4.76	21.9
EWF-105	85.0~105.0	95	2.0	4.76	24.0
EWF-120	100.0~120.0	110	2.0	4.76	27.5

- How to find the parts from the list

Please refer the reference number on the exploded view and choose the parts from the list according to its reference number.

Ref. No	Parts No.	Description	Quantity		Remarks
			EWF-9	EWF-15	
—	LBP001097	Casing assembly	1	1	
1	P2B100131	— Casing	1	1	
—	LBP000262	— Hook complete	1	1	
2	—	— — Hook	1	1	
—	LBP000263	— — Latch set	1	1	
3	—	— — — Latch	1	1	
4	—	— — — Spring	1	1	
5	—	— — — Rivet	1	1	
6	—	— — Shaft	1	1	

The mark indicates the range of the set or the complete unit.

- How to order the parts

Please inform us or our distributors of the parts information which include the model, part description, parts number and quantity.

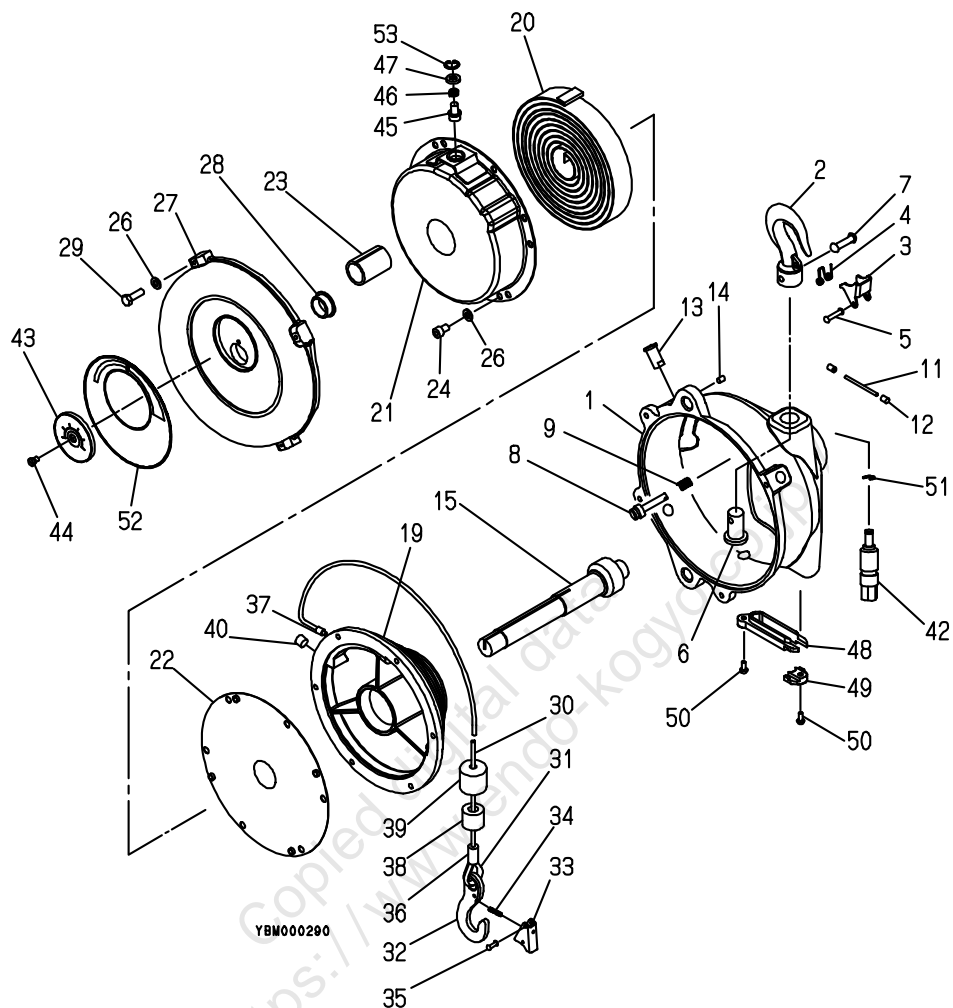
Example

model: EWF-9 parts name: drum parts number: P2B100045 quantity: 1

2. Parts list

2-1 Spring balancer Body

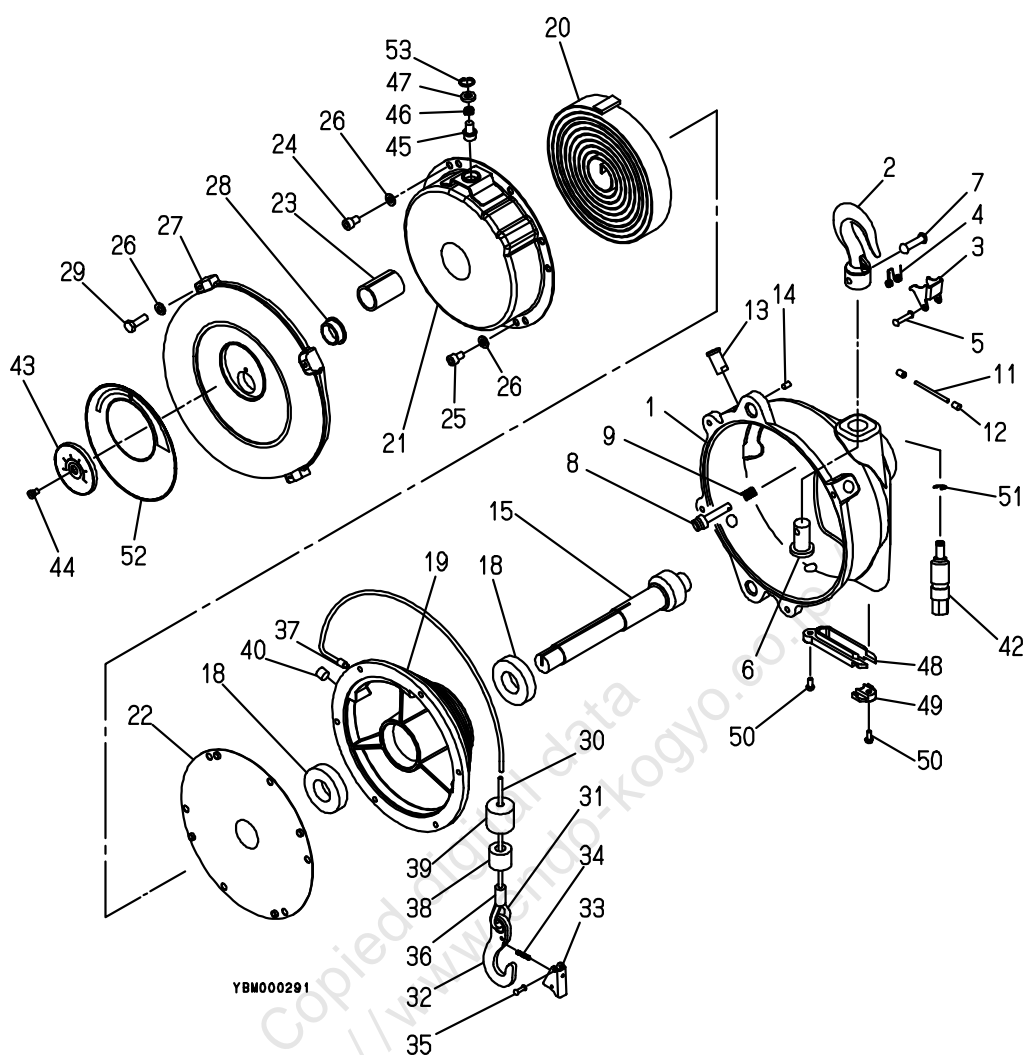
■ EWF-9/EWF-15



Ref. No	Parts No.	Description	Quantity		Remarks
			EWF-9	EWF-15	
—	LBP001097	Casing assembly	1	1	
1	P2B100131	—Casing	1	1	
—	LBP000262	—Hook complete	1	1	
2	—	— —Hook	1	1	
—	LBP000263	— —Latch set	1	1	
3	—	— — —Latch	1	1	
4	—	— — —Spring	1	1	
5	—	— — —Rivet	1	1	
6	—	— —Shaft	1	1	
7	—	— —Rivet	1	1	
8	P2B400347	—Pin	1	1	
9	P2B400081	—Spring	1	1	
11	P2B400224	—Spring pin	1	1	
12	P2B400348	—Cap	2	2	
13	P2B400044	—Pin	3	3	
14	P2B400041	—Set screw	3	3	
15	P2B300160	Spindle	1	1	
19	P2B100045	Drum	1	1	

Ref. No	Parts No.	Description	Quantity		Remarks
			EWf-9	EWf-15	
—	LBP000596	Spring assembly	1	—	
—	LBP000597	Spring assembly	—	1	
20	—	— Spring	1	1	
21	—	— Spring case	1	1	
—	LBP001822	— Safety pin set	1	1	
45	—	— — Safety pin	1	1	
46	—	— — Spring	1	1	
47	—	— — Spacer	1	1	
53	—	— — Retaining ring	1	1	
22	—	— Cover	1	1	
23	P2B300163	Bushing	1	1	
24	KA00120510	Hex. Head bolt	4	4	
26	KA31120500	Spring washer	7	7	
—	LBP000264	Cover complete	1	1	
27	—	— Cover	1	1	
28	—	— Bushing	1	1	
29	KA00120520	Hex. Head bolt	3	3	
—	LBP000136	Wire rope assembly	1	1	
30	—	— Wire rope	1	1	
31	—	— Thimble	1	1	
—	LBP001505	— Hook complete	1	1	
32	—	— — Hook	1	1	
—	LBP001524	— — Latch set	1	1	
33	—	— — — Latch	1	1	
34	—	— — — Spring	1	1	
35	—	— — — Rivet	1	1	
36	—	— Lock tube	1	1	
37	—	— Lock tube	1	1	
38	P2B400150	— Collar	1	1	
39	P2B400147	— Buffer	1	1	
40	P2H400007	Plug	1	1	
—	LBP001096	Wire guide set	1	1	
48	—	— Wire guide	1	1	
49	—	— Wire guide	1	1	
50	P2B401213	— Hex. socket button bolt	2	2	
42	P2B300062	Worm	1	1	
43	P2B300165	Gauge	1	—	
43	P2B300166	Gauge	—	1	
44	P2B400165	Screw	1	1	
51	KA40310050	Retaining ring	1	1	
52	P2B300806	Name plate	1	—	
52	P2B300807	Name plate	—	1	

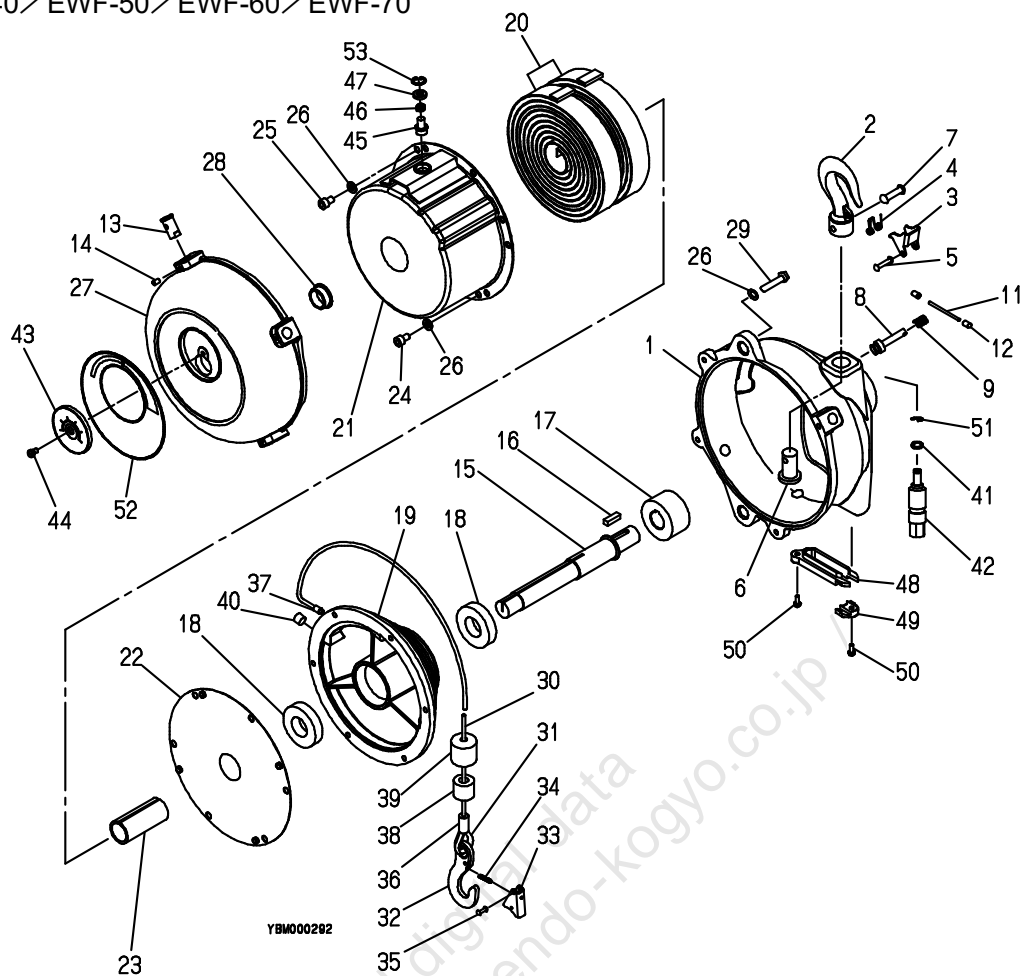
■ EWF-22/EWF-30



Ref. No	Parts No.	Description	Quantity		Remarks
			EWF-22	EWF-30	
—	LBP001015	Casing assembly	1	1	
1	P2B100125	—Casing	1	1	
—	LBP000215	—Hook complete	1	1	
2	—	— —Hook	1	1	
—	LBP000216	— —Latch set	1	1	
3	—	— — —Latch	1	1	
4	—	— — —Spring	1	1	
5	—	— — —Rivet	1	1	
6	—	— —Shaft	1	1	
7	—	— —Rivet	1	1	
8	P2B400358	—Pin	1	1	
9	P2B400082	—Spring	1	1	
11	P2B400225	—Spring pin	1	1	
12	P2B400359	—Cap	2	2	
13	P2B400045	—Pin	4	4	
14	P2B400042	—Set screw	4	4	
15	P2B300167	Spindle	1	1	
18	KA60103040	Ball bearing	2	2	
19	P2B100047	Drum	1	1	

Ref. No	Parts No.	Description	Quantity		Remarks
			EWf-22	EWf-30	
—	LBP000598	Spring assembly	1	—	
—	LBP000599	Spring assembly	—	1	
20	—	— Spring	1	1	
21	—	— Spring case	1	1	
—	LBP001823	— Safety pin set	1	1	
45	—	— — Safety pin	1	1	
46	—	— — Spring	1	1	
47	—	— — Spacer	1	1	
53	—	— — Retaining ring	1	1	
22	—	— Cover	1	1	
23	P2B300194	Bushing	1	1	
24	KA00120610	Hex. Head bolt	5	5	
25	P2B401234	Hex. Head bolt	1	1	
26	KA31120600	Spring washer	10	10	
—	LBP000265	Cover complete	1	1	
27	—	— Cover	1	1	
28	—	— Bushing	1	1	
29	KA00120620	Hex. Head bolt	4	4	
—	LBP000139	Wire rope assembly	1	1	
30	—	— Wire rope	1	1	
31	—	— Thimble	1	1	
—	LBP002127	— Hook complete	1	1	
32	—	— — Hook	1	1	
—	LBP002128	— — Latch set	1	1	
33	—	— — — Latch	1	1	
34	—	— — — Spring	1	1	
35	—	— — — Rivet	1	1	
36	—	— Lock tube	1	1	
37	—	— Lock tube	1	1	
38	P2B400151	— Collar	1	1	
39	P2B400148	— Buffer	1	1	
40	P2B400179	Plug	1	1	
—	LBP001021	Wire guide set	1	1	
48	—	— Wire guide	1	1	
49	—	— Wire guide	1	1	
50	P2B401213	— Hex. socket button bolt	2	2	
42	P2B300062	Worm	1	1	
43	P2B300196	Gauge	1	—	
43	P2B300197	Gauge	—	1	
44	P2B400165	Screw	1	1	
51	KA40310050	Retaining ring	1	1	
52	P2B300734	Name plate	1	—	
52	P2B300735	Name plate	—	1	

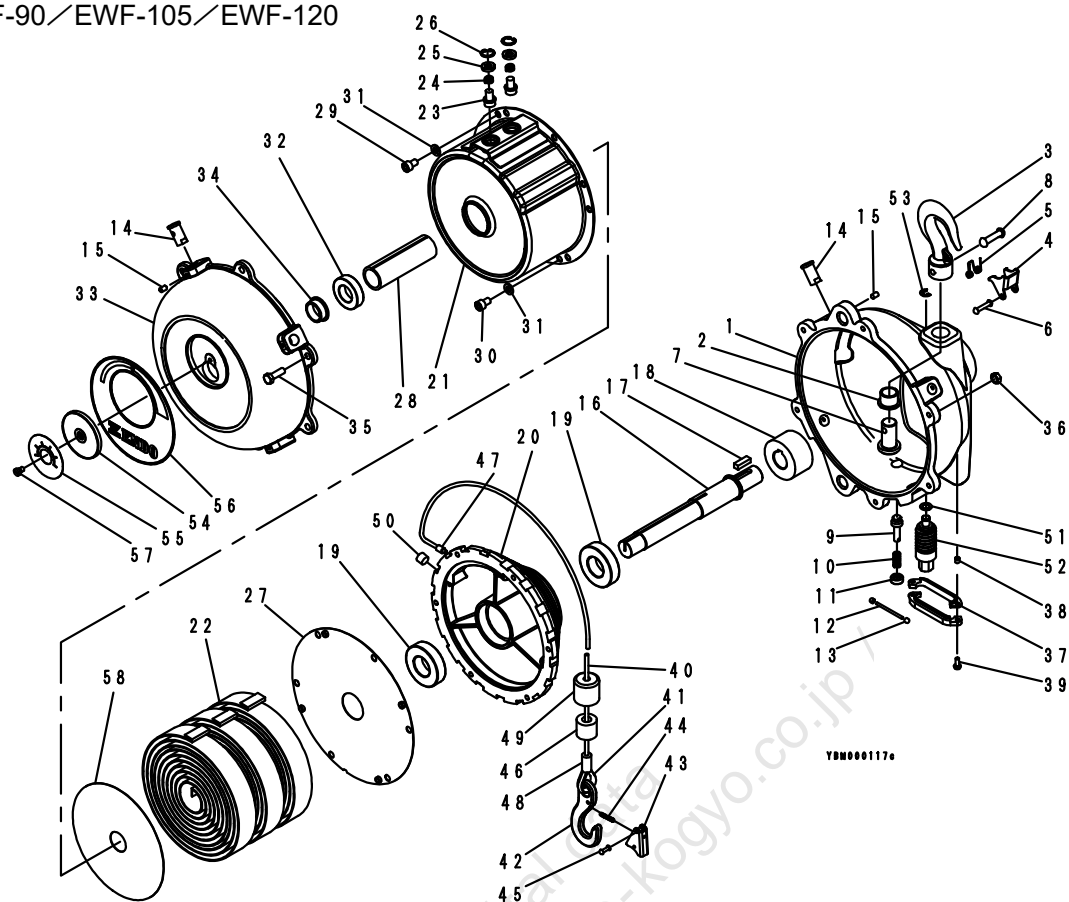
■ EWF-40/EWF-50/EWF-60/EWF-70



Ref. No	Parts No.	Description	Quantity				Remarks
			EWF-40	EWF-50	EWF-60	EWF-70	
—	LBP001016	Casing assembly	1	1	1	1	
1	P2B100169	—Casing	1	1	1	1	
—	LBP000215	—Hook complete	1	1	1	1	
2	—	— —Hook	1	1	1	1	
—	LBP000216	— —Latch set	1	1	1	1	
3	—	— — —Latch	1	1	1	1	
4	—	— — —Spring	1	1	1	1	
5	—	— — —Rivet	1	1	1	1	
6	—	— —Shaft	1	1	1	1	
7	—	— —Rivet	1	1	1	1	
8	P2B400380	—Pin	1	1	1	1	
9	P2B400082	—Spring	1	1	1	1	
11	P2B400225	—Spring pin	1	1	1	1	
12	P2B400359	—Cap	2	2	2	2	
15	P2B300198	Spindle	1	1	—	—	
15	P2B300199	Spindle	—	—	1	1	
16	P2B400164	Key	1	1	1	1	
17	P2B300051	Worm wheel	1	1	1	1	
18	KA60103040	Ball bearing	2	2	2	2	
19	P2B100047	Drum	1	1	1	1	
—	LBP000600	Spring assembly	1	—	—	—	
—	LBP000601	Spring assembly	—	1	—	—	
—	LBP000602	Spring assembly	—	—	1	—	
—	LBP000603	Spring assembly	—	—	—	1	

Ref. No	Parts No.	Description	Quantity				Remarks
			EWf-40	EWf-50	EWf-60	EWf-70	
20	—	— Spring	2	2	2	2	
21	—	— Spring case	1	1	1	1	
—	LBP001140	— Safety pin set	1	1	1	1	
45	—	— — Safety pin	1	1	1	1	
46	—	— — Spring	1	1	1	1	
47	—	— — Spacer	1	1	1	1	
53	—	— — Retaining ring	1	1	1	1	
22	—	— Cover	1	1	1	1	
23	P2B300203	Bushing	1	1	—	—	
23	P2B300204	Bushing	—	—	1	1	
24	KA00120610	Hex. Head bolt	5	5	5	5	
25	P2B401234	Hex. Head bolt	1	1	1	1	
26	KA31120600	Spring washer	10	10	10	10	
—	LBP001019	Cover assembly	1	1	—	—	
—	LBP001020	Cover assembly	—	—	1	1	
27	—	— — Cover	1	1	1	1	
28	—	— — Bushing	1	1	1	1	
13	P2B400045	— Pin	4	4	4	4	
14	P2B400042	— Set screw	4	4	4	4	
29	KA00120640	Hex. Head bolt	4	4	4	4	
—	LBP000139	Wire rope assembly	1	1	1	1	
30	—	— Wire rope	1	1	1	1	
31	—	— Thimble	1	1	1	1	
—	LBP002127	— Hook complete	1	1	1	1	
32	—	— — Hook	1	1	1	1	
—	LBP002128	— — Latch set	1	1	1	1	
33	—	— — — Latch	1	1	1	1	
34	—	— — — Spring	1	1	1	1	
35	—	— — — Rivet	1	1	1	1	
36	—	— Lock tube	1	1	1	1	
37	—	— Lock tube	1	1	1	1	
38	P2B400151	— Collar	1	1	1	1	
39	P2B400148	— Buffer	1	1	1	1	
40	P2B400179	Plug	1	1	1	1	
—	LBP001021	Wire guide set	1	1	1	1	
48	—	— Wire guide	1	1	1	1	
49	—	— Wire guide	1	1	1	1	
50	P2B401213	— Hex. socket button bolt	2	2	2	2	
41	P2B400163	Washer	1	1	1	1	
42	P2B300063	Worm	1	1	1	1	
43	P2B300205	Gauge	1	—	—	—	
43	P2B300206	Gauge	—	1	—	—	
43	P2B300207	Gauge	—	—	1	—	
43	P2B300208	Gauge	—	—	—	1	
44	P2B400165	Screw	1	1	1	1	
51	KA40310060	Retaining ring	1	1	1	1	
52	P2B300738	Name plate	1	—	—	—	
52	P2B300739	Name plate	—	1	—	—	
52	P2B300740	Name plate	—	—	1	—	
52	P2B300741	Name plate	—	—	—	1	

■ EWF-90/EWF-105/EWF-120



Ref. No	Parts No.	Description	Quantity			Remarks
			EWF-90	EWF-105	EWF-120	
—	LBP001133	Casing assembly	1	1	1	
—	LBP001134	—Casing compete	1	1	1	
1	P2B100133	—Casing	1	1	1	
2	P2B401334	—Bushing	1	1	1	
—	LBP001135	—Hook complete	1	1	1	
3	—	—Hook	1	1	1	
—	LBP001136	—Latch set	1	1	1	
4	—	—Latch	1	1	1	
5	—	—Spring	1	1	1	
6	—	—Rivet	1	1	1	
7	P2B401338	—Shaft	1	1	1	
8	KA46100838	—Rivet	1	1	1	
9	P2B401339	—Pin	1	1	1	
10	P2B401340	—Spring	1	1	1	
11	P2B400249	—Screw	1	1	1	
12	P2B401341	—Spring pin	1	1	1	
13	P2B400359	—Cap	2	2	2	
14	P2B401342	—Pin	4	4	4	
15	P2B400042	—Set screw	4	4	4	
16	P2B300818	Spindle	1	—	—	
16	P2B300819	Spindle	—	1	—	
16	P2B300820	Spindle	—	—	1	
17	P2B401343	Key	1	1	1	
18	P2B300821	Gear	1	1	1	
19	KA60104060	Ball bearing	2	2	2	
20	P2B100134	Drum	1	1	1	
—	LBP001137	Spring assembly	1	—	—	
—	LBP001138	Spring assembly	—	1	—	
—	LBP001139	Spring assembly	—	—	1	

Ref. No	Parts No.	Description	Quantity			Remarks
			EWf-90	EWf-105	EWf-120	
21	—	— Spring case	1	1	1	
22	—	— Spring	3	3	4	
58	—	— Plate	1	1	1	
—	LBP001140	— Safety pin set	2	2	2	
23	—	— — Safety pin	2	2	2	
24	—	— — Spring	2	2	2	
25	—	— — Spacer	2	2	2	
26	—	— — Retaining ring	2	2	2	
27	—	— Cover	1	1	1	
28	P2B300828	Bushing	1	—	—	
28	P2B300829	Bushing	—	1	—	
28	P2B300830	Bushing	—	—	1	
29	KA00910816	Cap screw	5	5	5	
30	KA00910812	Cap screw	1	1	1	
31	KA31120800	Spring washer	6	6	6	
32	KA60103050	Ball bearing	1	1	1	
—	LBP001141	Cover assembly	1	—	—	
—	LBP001142	Cover assembly	—	1	—	
—	LBP001143	Cover assembly	—	—	1	
—	LBP001144	— Cover complete	1	—	—	
—	LBP001145	— Cover complete	—	1	—	
—	LBP001146	— Cover complete	—	—	1	
33	—	— — Cover	1	1	1	
34	—	— — Bushing	1	1	1	
14	P2B401342	— Pin	4	4	4	
15	P2B400042	— Set screw	4	4	4	
35	KA00120835	Hex. head bolt	6	6	6	
36	KA20120800	Hex. nut	6	6	6	
—	LBP001390	Wire guide set	1	1	1	
37	—	— Wire guide	2	2	2	
38	P2B401352	— Spacer	2	2	2	
39	P2B401213	— Hex. socket button bolt	2	2	2	
—	LBP001094	Wire rope assembly	1	1	1	
40	—	— Wire rope	1	1	1	
41	—	— Thimble	1	1	1	
—	LBP002127	— Hook complete	1	1	1	
42	—	— — Hook	1	1	1	
—	LBP002128	— — Latch set	1	1	1	
43	—	— — Latch	1	1	1	
44	—	— — Spring	1	1	1	
45	—	— — — Rivet	1	1	1	
46	—	— Lock tube	1	1	1	
47	—	— Lock tube	1	1	1	
48	P2B400151	— Collar	1	1	1	
49	P2B400148	— Buffer	1	1	1	
50	P2B400179	Plug	1	1	1	
51	P2H401371	Washer	1	1	1	
52	P2B300832	Worm	1	1	1	
53	KA40310080	Retaining ring	1	1	1	
—	LBP001148	Gauge assembly	1	—	—	
—	LBP001149	Gauge assembly	—	1	—	
—	LBP001150	Gauge assembly	—	—	1	
—	LBP001150	Gauge assembly	—	—	1	
54	—	— Gauge	1	1	1	
55	—	— Label	1	1	1	
56	P2B300838	Name plate	1	—	—	
56	P2B300839	Name plate	—	1	—	
56	P2B300840	Name plate	—	—	1	
57	P2B400165	Screw	1	1	1	

ENDO 遠藤工業株式会社

〒959-1261 新潟県燕市秋葉町 3 丁目 14 番 7 号
TEL:0256-62-5133 FAX:0256-62-5772
<https://www.endo-kogyo.co.jp>

事業所情報につきましては、
二次元バーコードよりご確認ください。



ENDO ENDO KOGYO CO., LTD.

3-14-7, Akiba cho, Tsubame, Niigata 959-1261, Japan
<https://www.endo-kogyo.co.jp/english> TEL: 81-256-62-5133

- 本書ならびに本商品の仕様は改善のために予告なしに変更することがあります。
- 本書の内容の無断転載を禁止します。
- This manual and the specifications of this product are subject to change for improvement without advance notice.
- It is strictly prohibited to reprint or copy any information contained in this manual.